



Micros 3700 Setup

Version 1.0

September, 2021

www.FeeMachine.com

info@feemachines.com

Copyright 2021, Fee Machines, LLC

Overview

This document describes the steps needed to configure a Micros 3700 system to accept menu item ids and fees from a QR Code scanned from a Fee Machine tablet.

This document assumes the user has access to the Micros POS Configurator application and has some experience with Micros Configuration.

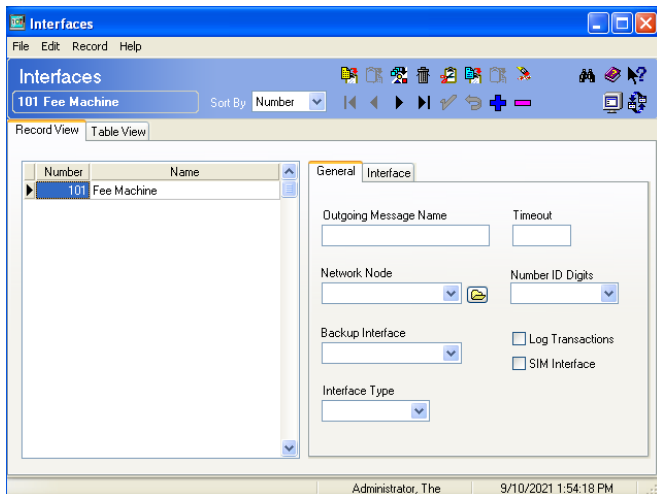
Table of Contents

Configuring the System	3
SIM Interface Setup	3
SIM File Name	3
Rental Fees Button Setup	4
Menu Items Setup	5
QR Code Scanner Installation	6
Micros Refresh	6
Fee Machine Location POS Type Setup	7
Using the System	8

Configuring the System

SIM Interface Setup

In POS Configurator, select the **Devices** tab, then the **Interfaces** button. Create a new Interface as shown (no options selected), using Interface # **101** if available, otherwise note the interface number for future reference.



SIM File Name

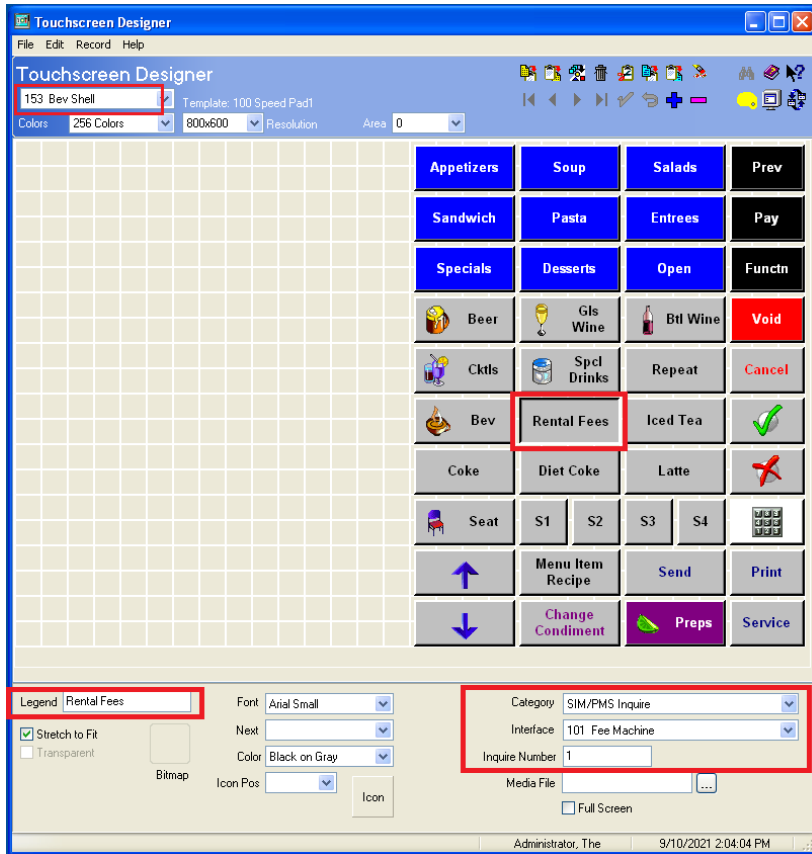
Fee Machine uses an SIM/ISL file to communicate with Micros. The file is named **pms101.isl**. This assumes Interface # **101** is available for use on your system. IF NOT, then you will need to rename the file to use an available interface name (for example, if using #55, then rename to pms55.isl). You will then need to install the properly name file in the appropriate location for your system, typically D:\MICROS\Res\Pos\Etc and/or C:\MICROS\Res\CAL\WS4\Files\CF\Micros\ETC, depending on your terminal types.

Get the Fee Machine SIM File [here](#).

Rental Fees Button Setup

To accept Fees from Fee Machine, a button must be defined to activate the SIM Module which accepts the QR coded Item Ids and Fees. This button must be made available on a Micros Panel so that the appropriate Micros POS users can scan the Fee Machine QR coded item id and fees onto the desired guest check.

In POS Configurator, select the **Devices** tab, then the **Touchscreen Designer** button.



Create a button, or modify an existing button as shown:

- **Legend** - The text on the button
- **Category** - SIM/PMS Inquire
- **Interface** - Choose the Interface configured in the previous step
- **Inquire Number** - 1. Note: You may have to save changes before this field is editable.

Menu Items Setup

A Menu Item Id must be created in Micros for each Menu Item Id being used in Fee Machine, otherwise errors and/or loss of revenue may occur.

In POS Configurator, select the **Sales** tab, then the **Menu Items** button.

The screenshot displays the 'Menu Items' configuration window in the Micros POS Configurator. The window has a menu bar (File, Edit, Record, Help) and a toolbar with various icons. The main area is divided into a list view on the left and a configuration form on the right. The list view shows a table of menu items with columns 'Number' and 'Name1'. The item '9001 Rental Fee' is selected and highlighted in red. The configuration form for this item is shown on the right, with tabs for 'Definition', 'Reporting', and 'Prices'. The 'Definition' tab is active, showing fields for 'Name1' (Rental Fee), 'Name2', 'Classes' (702 Miscellaneous Ope), 'Menu Level Class' (101 All Levels), 'Print Class', 'Preparation Time', 'Access' (SLU), 'SLU Priority', 'NLU', 'Key Code' (9001), and 'NLU Group'. The 'Key Code' field is highlighted in red. The status bar at the bottom shows 'Administrator, The' and the date/time '9/10/2021 2:54:46 PM'.

Number	Name1
8000	- Specials
8001	Special #1
8002	Special #2
8003	Special #3
8004	Dinner For Two
9000	- Kids
9001	Rental Fee
10000	- Sides
11000	- Desserts
11001	Ice Cream
11002	Crepe Brulee
11003	Tira Misu
11004	Straw Crm Puffs
11005	Raspbrry Torte
11006	Chocolate Cake
11007	Apple Pie
11008	Key Lime Pie
90000	- Food Condiment
90001	Add
90002	As Appetizer
90003	As Entree

Menu Item Configuration:

- Name1: Rental Fee
- Name2:
- Classes: 702 Miscellaneous Ope
- Menu Level Class: 101 All Levels
- Print Class:
- Preparation Time:
- Access: SLU
- SLU Priority:
- NLU:
- Key Code: 9001
- NLU Group:

Create a Menu Item, or modify an existing Menu Item as shown:

- **Item Number** - Max Length of this value is 8 characters.
- **Name** - The line item name to be shown on the Guest Check.
- **Menu Item Class** - Choose a Menu Item class where **Preset Prices** is **NOT Checked**
- **Key Code** - This must match the item id used in Fee Machine.

Other values such as Menu Item Class and Menu Level Class should be set as appropriate for your system.

NOTE: Do not define any prices for this item!

QR Code Scanner Installation

It is not necessary to configure a barcode scanner within Micros for this application. The barcode scanner should be connected to the Micros Terminal Usb port, and should be treated as a keyboard port.

Micros Refresh

Be sure to perform a **Reboot All** command once all changes have been made.

Fee Machine Location POS Type Setup

Go to <https://feemachine.com/>, sign in, and select your location, then select location detail, and then select POS Type of Micros 3700 as shown. Be sure to save your changes and refresh your tablet's configuration.

The screenshot displays the Fee Machine web application interface. At the top, there is a navigation bar with the 'FEE MACHINE' logo and buttons for 'Product', 'Contact Us', 'Admin', and 'Sign Out'. Below this, a header bar indicates the 'Licensee: Front Runner Billiards, Littleton, Co' with a 'Manage' button. The main content area is titled 'Location: Front Runner Downtown, Littleton, CO' and includes a 'Reports' button. A tabbed interface shows 'Location Detail' as the active tab, with other tabs for 'Fee Groups', 'Fees', 'Fee Tester', 'Rentals', and 'Floor Plans'. The 'Location Detail' section contains various input fields: 'Location Name' (Front Runner Downtown), 'Id 49 Config Version 62', an 'Enabled' checkbox, 'Address 1' (555 Main), 'Address 2', 'City' (Littleton), 'State' (CO), 'Postal Code' (80120), 'Phone 1' (3035551212), 'Phone 2', 'Web Site', 'POS Type' (Micros 3700), 'End of Day Time' (5am), and a 'Light Control Enabled' checkbox. The 'Location Detail' tab and the 'POS Type' dropdown are highlighted with red boxes.

Fee Machine

Product Contact Us Admin Sign Out

Licensee: Front Runner Billiards, Littleton, Co Manage

Location: Front Runner Downtown, Littleton, CO Reports

Location Detail Fee Groups Fees Fee Tester Rentals Floor Plans ?

Location Detail Copy

Location Name Front Runner Downtown Id 49 Config Version 62 ?

☒ Enabled ?

Address 1 555 Main

Address 2

City Littleton

State CO

Postal Code 80120

Phone 1 3035551212

Phone 2

Web Site


POS Type Micros 3700 ?

End of Day Time 5am ?

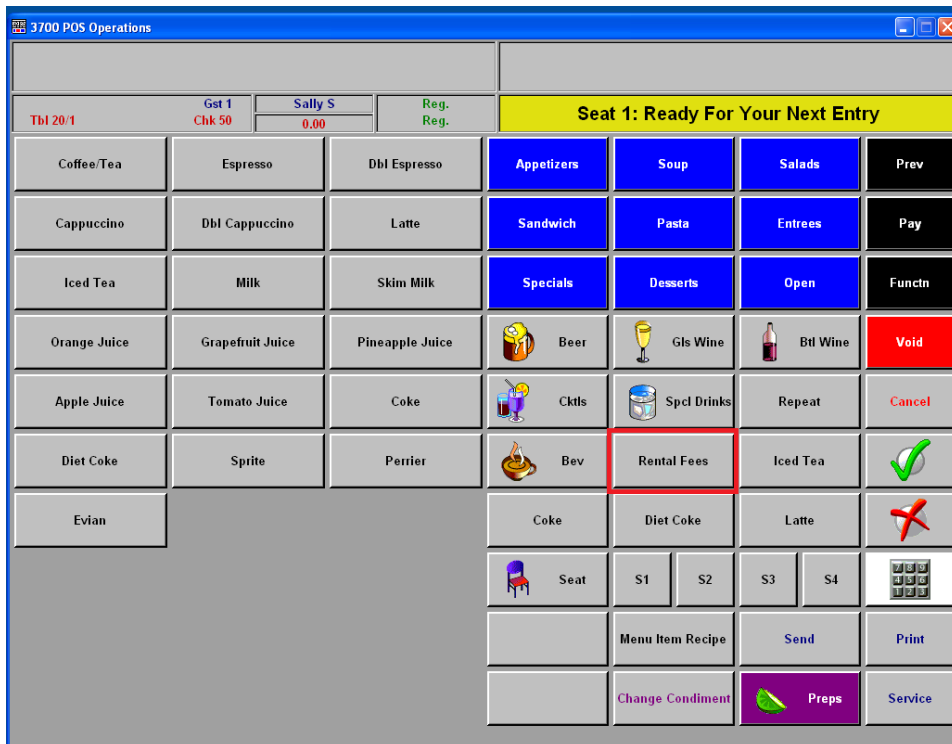
☐ Light Control Enabled ?

Using the System

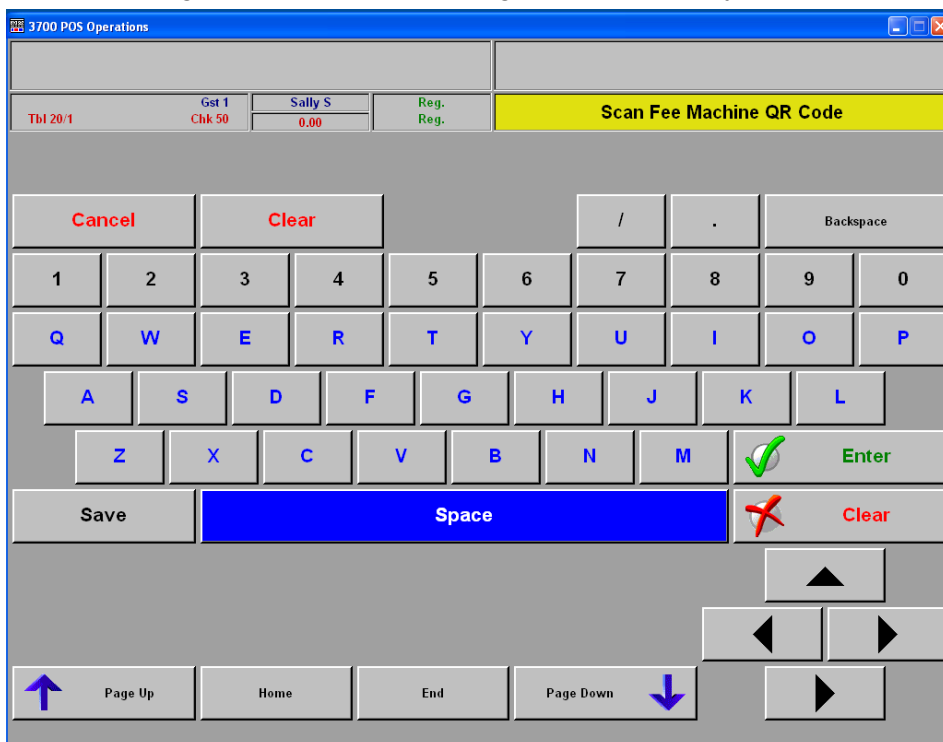
When the time has come to complete a Rental and transfer the fees to Micros, select the Complete Rental button for the desired rental on the Fee Machine tablet:

Rentals	Previous Checks	Functions	11:30AM
Rental Item: Table 3 - Total: \$6.77 - Rate Type: Normal - Check: 22			
Players: 8 (Player 1, Player 2, Player 3, Player 4, Player 5, Player 6, Player 7, Player 8)			
Start Time: 11:08AM - Stop Time: Fri 11:22AM - Total Time: 00:14			
Fees			
Player 1 :	\$0.85		
Player 2 :	\$0.85		
Player 3 :	\$0.85		
Player 4 :	\$0.85		
Player 5 :	\$0.85		
Player 6 :	\$0.85		
Player 7 :	\$0.85		
Player 8 :	\$0.82		
Total:	\$6.77		

On the Micros 3700 System, navigate to the button that was configured in the previous step:



Upon selecting the button, the following screen is displayed:



Scan the Fee Machine QR Code.

The screen may flash as the QR Code data is being processed and as items are added to the check:

3700 POS Operations								
Ttl 20/1		Gst 1 Chk 51	Sally S	Reg. Reg.	Seat 1: Ready For Your Next Entry			
1 Rental Fee	15.68	1	▲	GC Redeem	Discount	\$20	Prev	
1 Rental Fee	15.68	1		Manual CC	Account Charge	\$10	Pay	
1 Rental Fee	15.68	1		Auth C.C.	Room Charge	\$5	Funcn	
1 Rental Fee	15.66	1		C.C. Final	Ziosk Pay	Cash	Void	
				15% Grat	Charge Tip	Tax Exempt	Cancel	
				Enter	Clear	@/For	Seat #	
				7	8	9	Filter Seat	
				4	5	6	Carry Out	
				1	2	3	Print	
				0	.	00	Service	
Subtotal		62.70						
Tax		3.76						
Service Chrg		0.00						
Payment		0.00						
Eat In Ttl		66.46						

Congratulations! You are up and running!